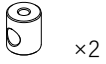


10H-RK06 2022 FKJ Rack Installation instructions

Type | Specification | Material Unit: mm



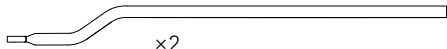
×2

[1] 10H-RK12-A | 15.9×19.1 | Titanium



×2

[2] 10H-RK12-B | 12×21.9×30 | Titanium



×2

[3] 10H-RK12-D | 304×φ8 | Titanium



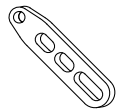
×6

[4] 10H-RK12-G | M6×12 Cylindrical head | SUS304



×2

[5] 10H-RK12-F | M5×20 Cylindrical head | SUS304



×2

[6] 10H-RK12-C | 62.6×13.9×6 | Titanium



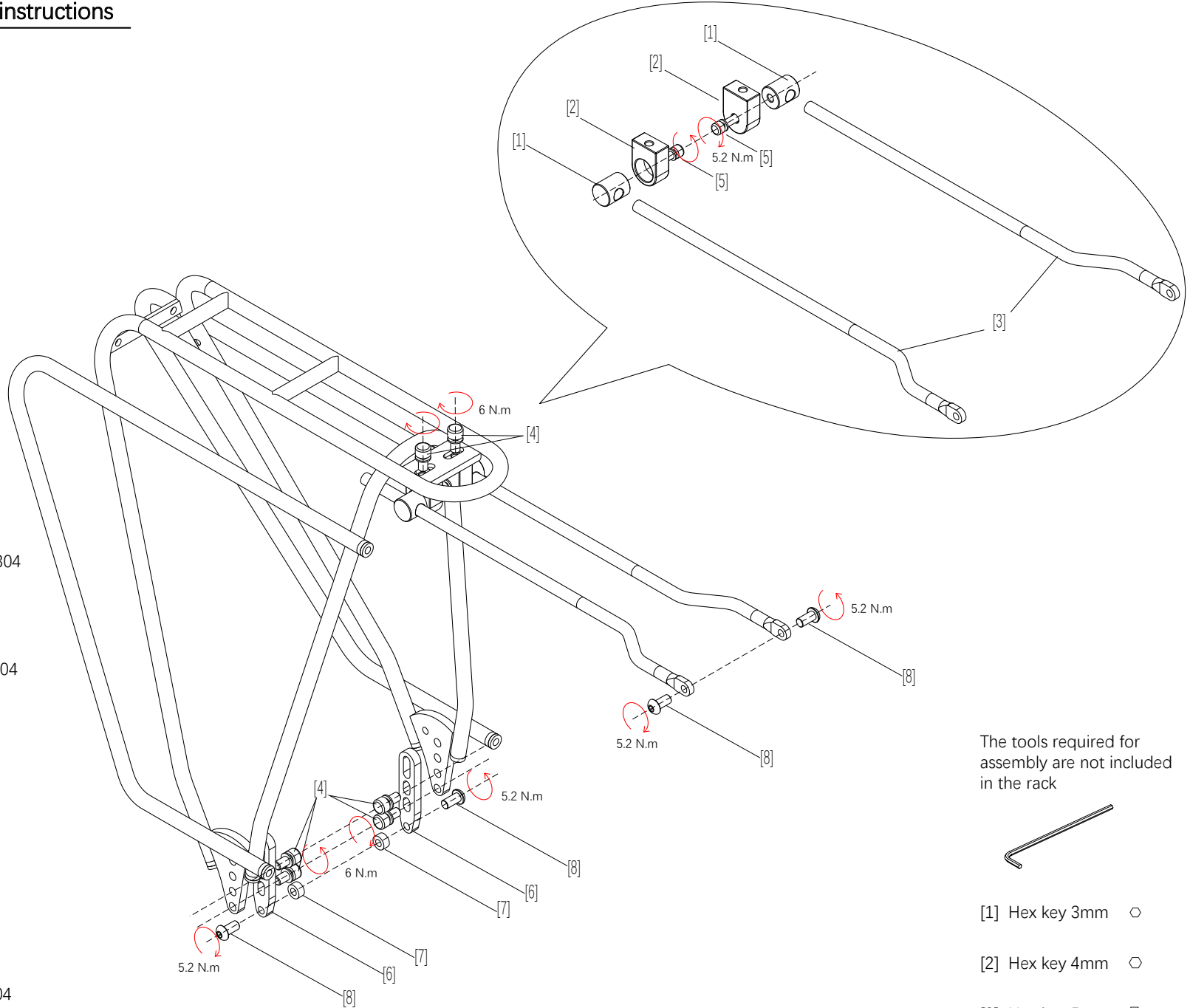
×2

[7] 10H-RK12-E | 10×5 | Titanium | Alternative



×4

[8] Frame attached | M5×12 Umbrella head | SUS304



The tools required for assembly are not included in the rack



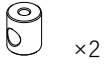
[1] Hex key 3mm ○

[2] Hex key 4mm ○

[3] Hex key 5mm ○

10H-RK07 2022 FKJ Rack-2 Installation instructions

Type | Specification | Material Unit: mm



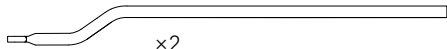
×2

[1] 10H-RK12-A | 15.9×19.1 | Titanium



×2

[2] 10H-RK12-B | 12×21.9×30 | Titanium



×2

[3] 10H-RK12-D | 304×φ8 | Titanium



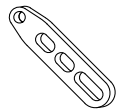
×6

[4] 10H-RK12-G | M6×12 Cylindrical head | SUS304



×2

[5] 10H-RK12-F | M5×20 Cylindrical head | SUS304



×2

[6] 10H-RK12-C | 62.6×13.9×6 | Titanium



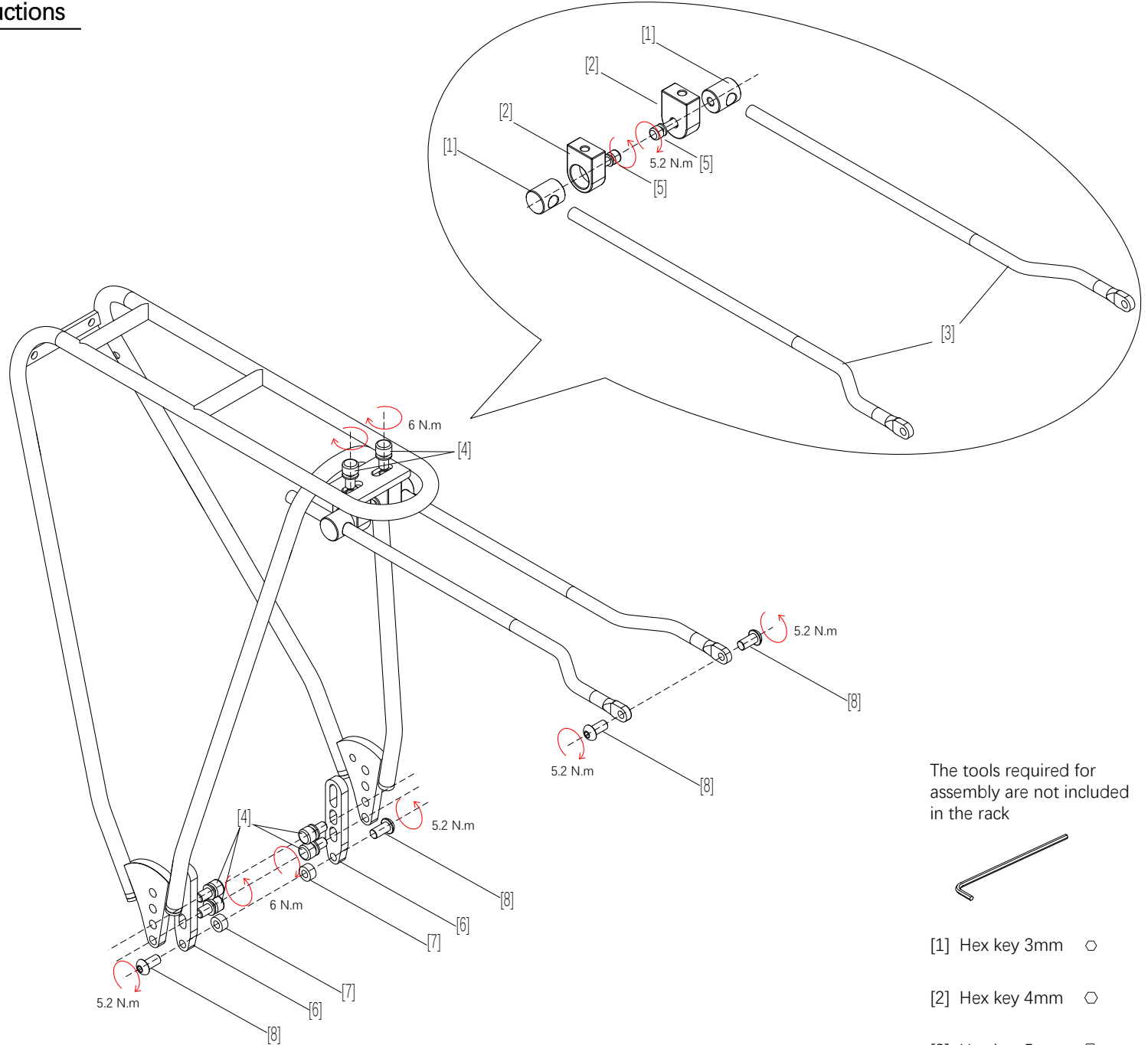
×2

[7] 10H-RK12-E | 10×5 | Titanium | Alternative



×4

[8] Frame attached | M5×12 Umbrella head | SUS304



The tools required for assembly are not included in the rack



[1] Hex key 3mm ○

[2] Hex key 4mm ○

[3] Hex key 5mm ○